

Copyright © SILVERSTONE INDUSTRIAL
SILVERSTONE INDUSTRIAL reserves the rights to change any interpretation
in this brochure without notice.

INTEGRATED STATIONPACK SN-H/V SCREW AIR COMPRESSOR

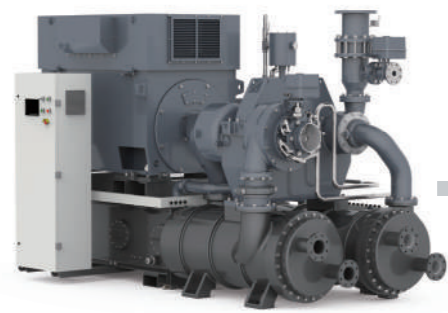


E-mail: contact@sind.ltd
Web: www.sind.ltd

HIGH ENERGY-EFFICIENCY
AIR COMPRESSOR MANUFACTURER

STATIONPACK SN-H | STATIONPACK SN-V

COMPRESSED AIR PURIFICATION FLOW CHART



Centrifugal Air Compressor



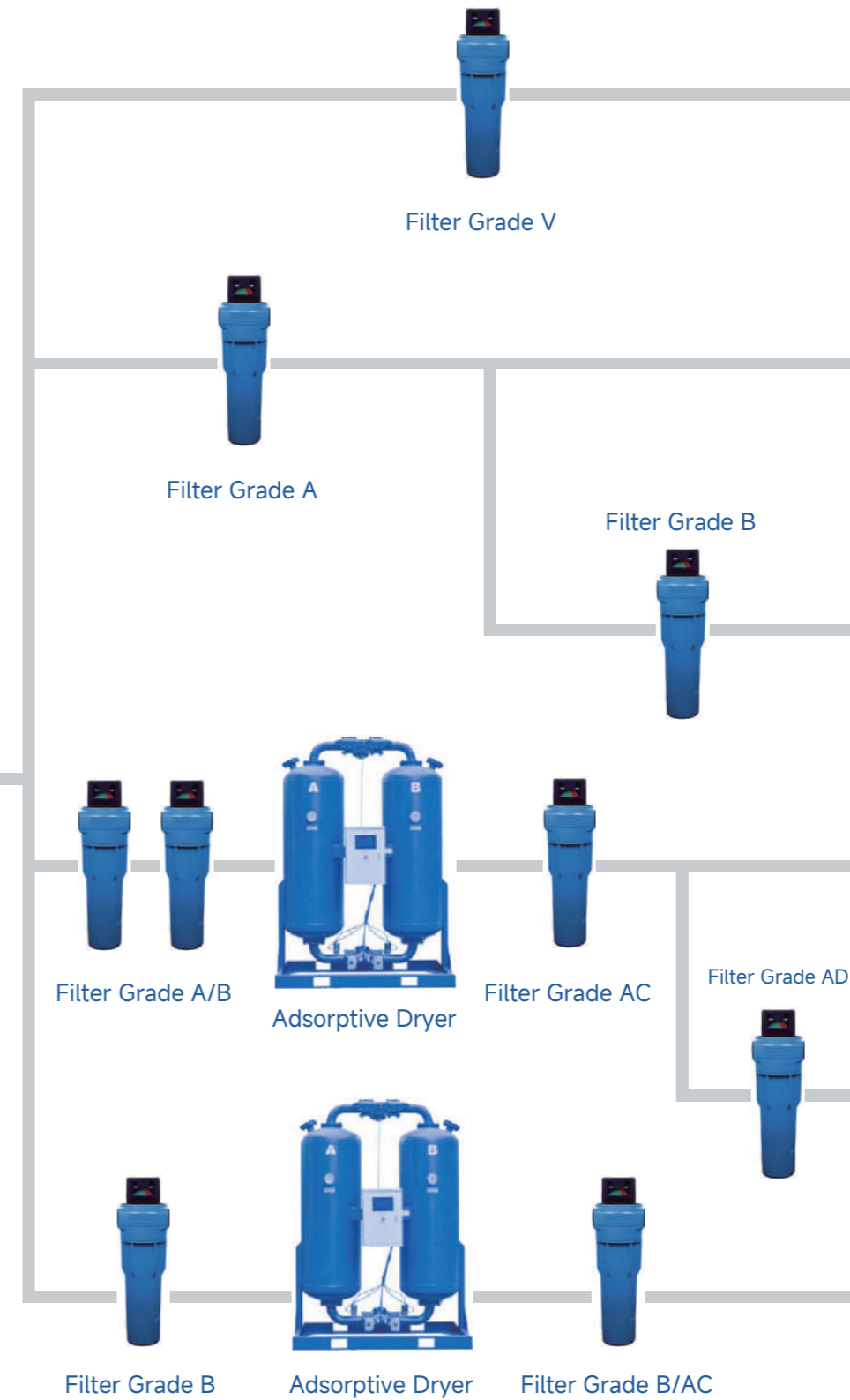
Oil Free Screw/Scroll Air Compressor



Oil Lubricated Screw Air Compressor



Consumables



1 Architecture
Cleaning
Sand Blasting
Stamping

2 Metalwork
Pressure Forming
Pneumatic Machinery
Parts Drying

3 Precision Machinery
Electronic Industry
Packing
Printing

4 Spraying
Electronics
Textile

5 Medicine
Bioengineering
Chemical Industry

6 Lithium Battery
Pharmacy
Food



CATALOGUE

ABOUT SIND

01~02 ▶▶▶

PRODUCT FEATURES

03~10 ▶▶▶

LASER CUTTING STATIONPACK SN SERIES

21~28 ▶▶▶

STATIONPACK SN-H SERIES

11~16 ▶▶▶

STATIONPACK SN-V SERIES

17~20 ▶▶▶



ABOUT SIND

Silverstone Industrial, a family-owned industrial alliance, has roots in United Compressor Systems (UCS) and has formed strategic partnerships with AirThink and AST to deliver innovative solutions in industrial air compressor technology.

UCS, Founded in 2002, UCS specialises in developing and manufacturing high-efficiency industrial compressors under the United OSD and United Compressor Systems brands. Since 2013, a strategic partnership with Japan's HITACHI Group has enhanced UCS's capabilities in design, production, and quality control, leading to the launch of innovative and energy-saving products such as two-stage screw compressors and oil-free compressors.

AirThink, a high-tech enterprise headquartered in the same industrial park as UCS in Jiading, Shanghai, offers a comprehensive range of services for compressed air systems, including intelligent equipment R&D, customisation, and air compressor station lifecycle management. With a strong focus on energy efficiency and safe production, Air-Think serves a diverse range of industries across China through its network of over ten subsidiaries.

AST, co-located with AirThink's manufacturing base in Wuxi, focuses on the R&D, manufacturing, and sales of reliable and efficient centrifugal compressors. These products cater to industries such as steel, petrochemical, and automotive, providing high-quality services on a global scale.

The industrial alliance has earned a broad reputation and ranks among the top five in manufacturing output in China's air compressor industry. The alliance offers a comprehensive product series, including stationary and mobile-type screw/scroll compressors, centrifugal compressors, and innovative compressor solutions, to industrial users. By leveraging robust product and technical service support, Silverstone Industrial targets the international market, providing customers with cost-effective air compressor products and compressed air station solutions.



AST Production Plant
(Centrifugal Compressor)



AirThink Joint Production Plant
(Intelligent Skid / Container Air Station)



UCS & Hitachi Joint Production Plant
(Screw & Scroll Compressor)

INTEGRATED STATIONPACK SN-H/V SCREW AIR COMPRESSOR



COMPONENTS STRUCTURE



Enlarge the rotor fan,
Faster heat dissipation, low noise.



Worry-free for life, explosion-proof
oil mirror is safe and reliable.

- "IE4" permanent magnet variable frequency motor, high efficiency and energy saving.
- Reasonable installation, horizontal and horizontal layout design.



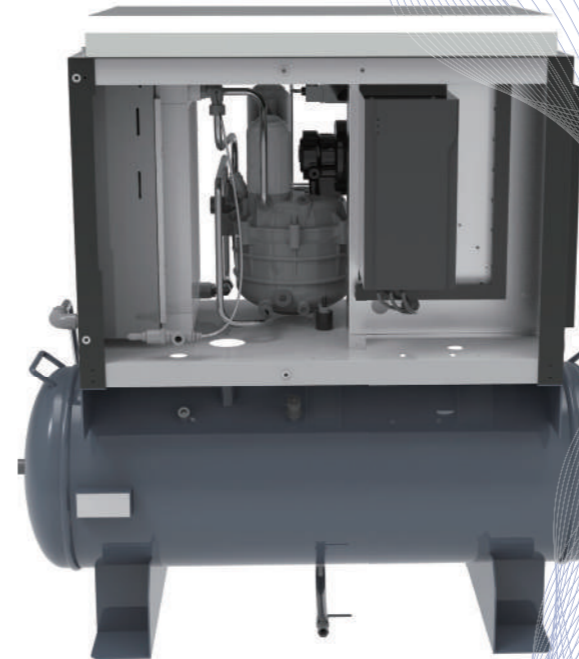
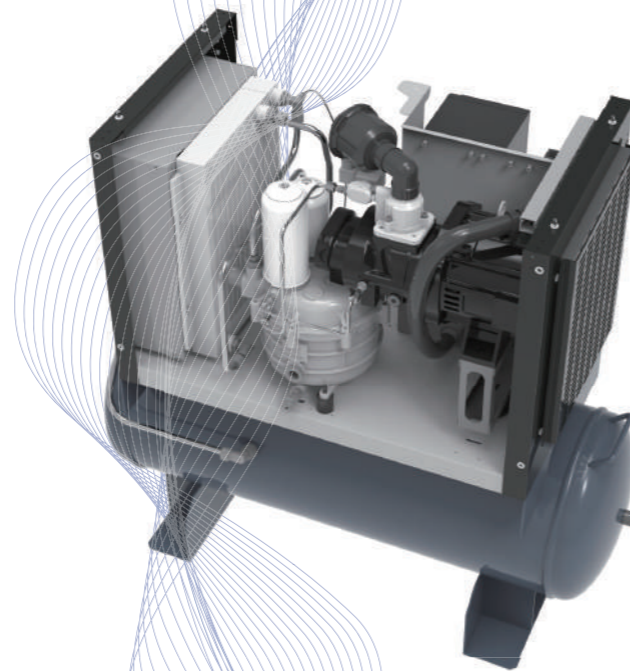
External air inlet filter.



Increase the heat dissipation of the cooler,
and the cooling effect is rapid.



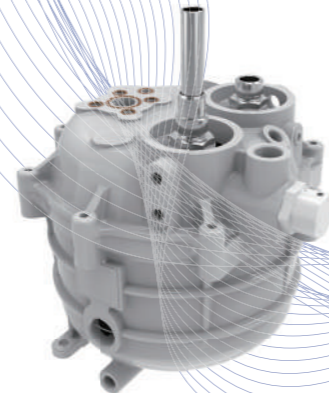
Inherits the traditional high-efficiency air end,
6 bearings, morse taper connection to truly
integrated the air end.



Back to the traditional "860"
operation panel, simple operation.



Vertical intelligent intake valve, it is more
convenient to control the air intake effectly.



New oil-air seperator,
which of the independent intellectual property rights.



Standard heavy-duty inverter, reliable
performance, easy to use.

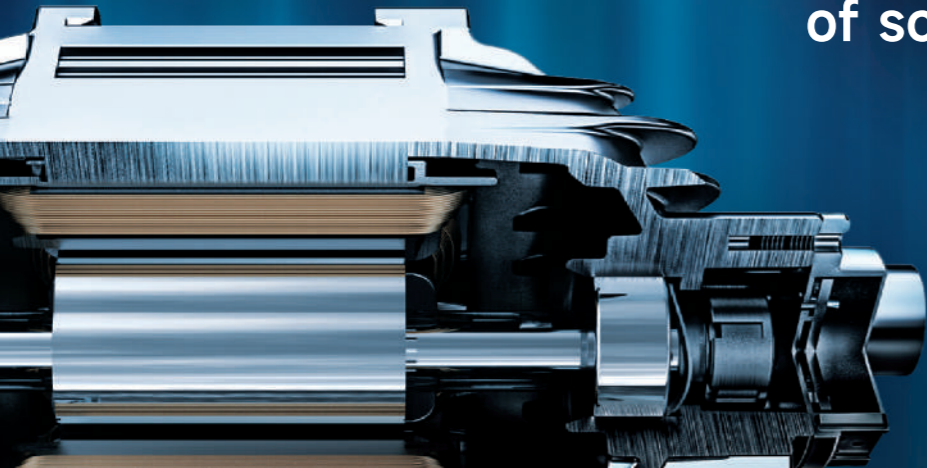


External oil/air seperator, oil filter,
unique "hexagonal" design helps easy
maintenance for users.

Permanent magnet VFD characteristics

Application advantages

The energy saving idea leads the future of science and technology!



FEATURES OF PERMANENT MAGNET MOTOR

- > The motor efficiency is up to 96%, and the power factor is 0.99, far exceeding the level 1 energy efficiency standard;
- > High coerced, and high temperature resistant permanent magnets are adopted to ensure no demagnetization at 180°C;
- > Independent fan-forced cooling to ensure the motor's long time low-frequency safe operation;
- > F grade insulation, 70K temperature rise design, adapt to the high-temperature working condition of air compressor;
- > Fully enclosed IP55 protection class can protect the clean internal environment of the motor and extend the life of permanent magnet and insulation;
- > Built-in temperature protection to protect winding insulator and permanent magnet.

FEATURES OF PERMANENT MAGNET VFD AIR COMPRESSOR

- > Ultra-low temperature rise design to allow stable compressor operation under low frequency;
- > Open-loop vector control system, faster control speed, more accurate rate;
- > When the frequency is reduced by more than 50%, the compressor unit can still run efficiently;
- > Stable pressure, pressure fluctuation is precisely controlled within 0.1bar;
- > Soft start feature, to avoid start current impact, reduce start energy consumption.

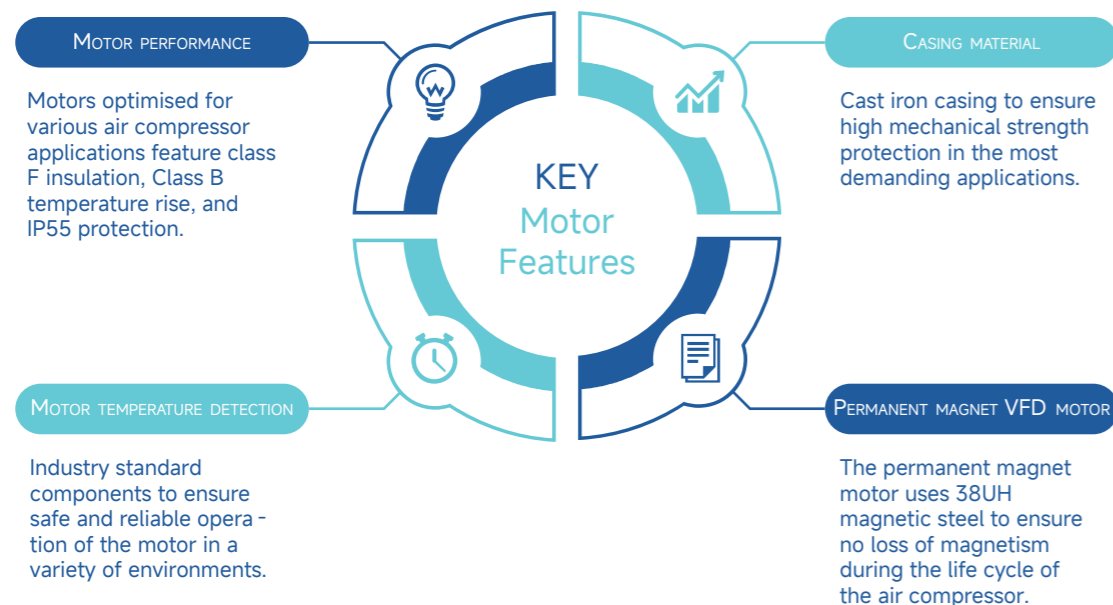
ELECTRICITY COST SAVING BY MORE THAN 50%

SIND COMPACT SERIES, with wide applicable scenes, wide voltage service, frequency conversion technology, and small starting current Residential electricity is also accepted, and its cost is about 1/2 of that of industrial electricity 220V variable-frequency motor has the energy efficiency 50% higher than that of the ordinary motor.

REDUCE ENERGY COSTS

Under different conditions, the demand for gas will float. Through a large number of research and calculation of market demand, SIND confirmed it. Only about 10% of applications require stable air supply. Therefore, frequency conversion compressor can play a greater role in energy saving.

Energy cost often accounts for 70% of the life cycle cost of a compressor. The production of compressed air may account for 40% of all electricity costs in the plant. In almost every factory, the gas consumption will vary with different time periods, with its high and low peak periods. SIND permanent magnet variable frequency screw air compressor can supply gas completely according to the requirements of gas consumption, which can not only save a lot of energy, but also protect the environment for future generations.



ENERGY SAVING TECHNOLOGY

PROFESSIONAL CUSTOMIZATION

The double screw air compressor is specially designed for 15bar pressure condition. The bearing and shaft seal are specially improved and designed. It can run for a long time under 13-15bar working pressure. The whole machine is integrated into one, with compact structure and space saving.

Provide 13-15bar compressed air, special high-efficiency oil-cooled separation system to ensure oil content after treatment by high-efficiency filter.

The special thickened vacuum seal welded plate fin heat exchanger has a pressure bearing capacity of 25bar or more, which ensures the safety and reliability of the intelligent control system. One key control automatically controls the start and stop of the heat exchanger to minimize the energy efficiency.

The permanent magnet material with high temperature of 180°C is used to effectively ensure that the permanent magnet unit will never be demagnetized. High efficiency motor power saving, and the specific power is low.



SCUSTOM OIL COOLED MOTOR

Single-stage energy-efficient air-end, Low Noise, IP65 protection.



HIGH MOBILITY (optional)

Easy and flexible to rotate, so that the air compressor is able to move conveniently and quickly (optional).



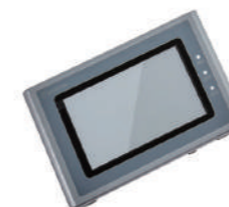
AUTOMOTIVE PERMANENT MAGNET MOTOR

IE4 high efficiency permanent magnet motor: AUTOMOTIVE PERMANENT MAGNET AIR-END For N38UH high grade permanent magnet, IP67 protection grade, and fully enclosed structure, unique vacuum epoxy dipping paint, effectively guaranteeing the stable operation of unit.



PERMANENT MAGNET VARIABLE-FREQUENCY DRIVE

Permanent magnet variable-frequency conversion technology, wide voltage, energy-saving, with a small impact on the power grid.



7 INCH TOUCH SCREEN

Large touch screen, all-round protection monitoring, with functions of motor start/stop control, operation control; reversal protection of air compressor; and multi-point temperature detection and control protection.

STATIONPACK SN-H

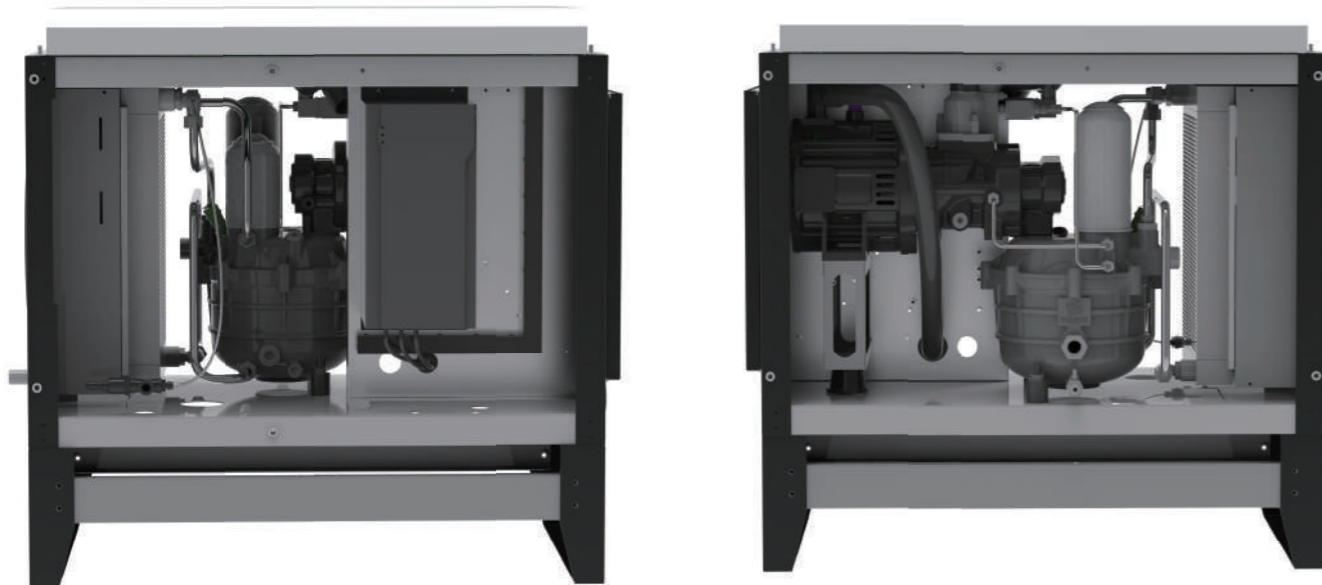
8-12.5BAR 220-380V

Permanent Magnet Variable-Speed



■ STATIONPACK SN Horizontal Type PM VFD Screw Air Compressor Parameter Table

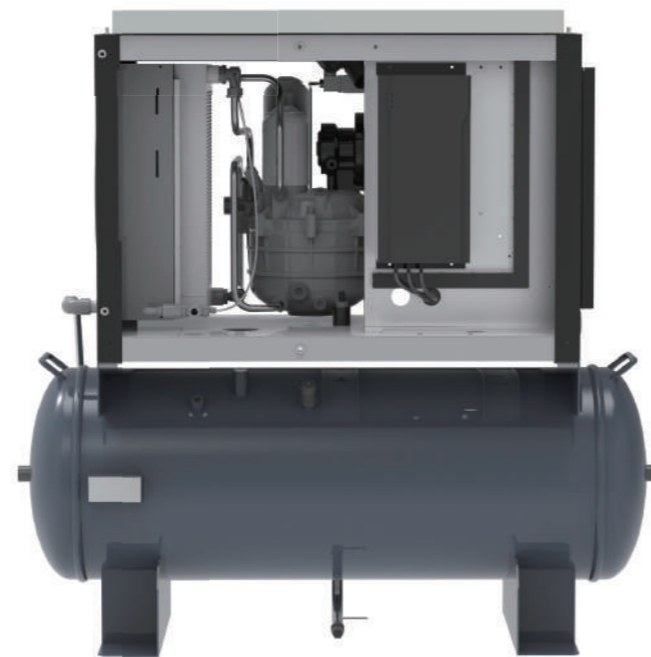
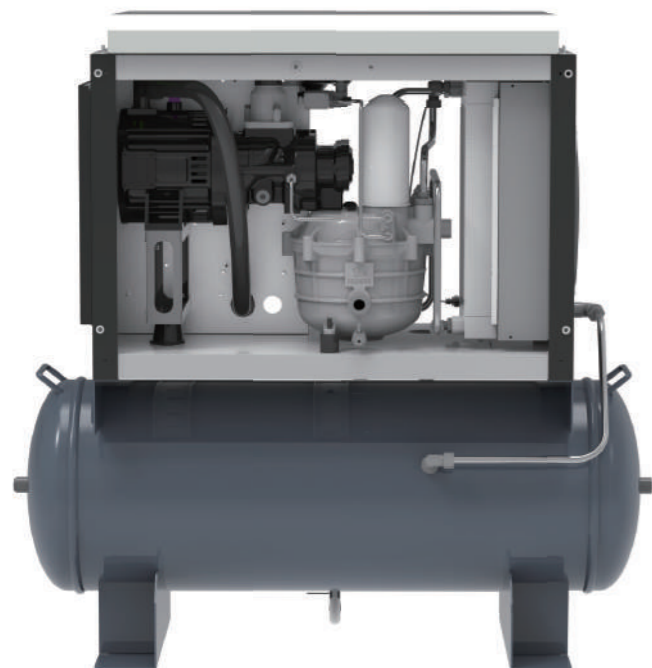
Model	Power (kW)	Voltage (V)	Working Pressure (bar)	FAD (m ³ /min)	Air storage tank (L)	Profile Dimension L x W x H (mm)
StationPack SN2.2-8-H StationPack SN2.2-10-H	2.2	220/380	8 10	0.2-0.26 0.2-0.22	/	800*540*755
StationPack SN3.7-8-H StationPack SN3.7-10-H StationPack SN3.7-12.5-H	3.7	220/380	8 10 12.5	0.15-0.3 0.2-0.4 0.175-0.35	/	800*540*755
StationPack SN4.5-8-H StationPack SN4.5-10-H StationPack SN4.5-12.5-H	4.5	220/380	8 10 12.5	0.25-0.5 0.25-0.42 0.25-0.36	/	800*540*755
StationPack SN5.5-8-H StationPack SN5.5-10-H StationPack SN5.5-12.5-H	5.5	220/380	8 10 12.5	0.15-0.3 0.3-0.7 0.3-0.55	/	800*540*755
StationPack SN7.5-8-H StationPack SN7.5-10-H StationPack SN7.5-12.5-H	7.5	220/380	8 10 12.5	0.3-0.6 0.49-0.98 0.4-0.9	/	920*600*870
StationPack SN9-8-H StationPack SN9-10-H StationPack SN9-12.5-H	9	220/380	8 10 12.5	0.4-0.8 0.6-1.2 0.5-1	/	920*600*870



STATIONPACK SN-H1

8-12.5BAR 220-380V

Permanent Magnet Variable-Speed



■ STATIONPACK-SN Horizontal Type PM VFD Screw Air Compressor Parameter Table

Model	Power (kW)	Voltage (V)	Working Pressure (bar)	FAD (m ³ /min)	Air storage tank (L)	Profile Dimension L x W x H (mm)
StationPack SN2.2-8-H1 StationPack SN2.2-10-H1	2.2	220/380	8 10	0.2-0.26 0.2-0.22	100	1020*540*1035
StationPack SN3.7-8-H1 StationPack SN3.7-10-H1 StationPack SN3.7-12.5-H1	3.7	220/380	8 10 12.5	0.15-0.3 0.2-0.4 0.175-0.375	100	1020*540*1035
StationPack SN4.5-8-H1 StationPack SN4.5-10-H1 StationPack SN4.5-12.5-H1	4.5	220/380	8 10 12.5	0.25-0.5 0.25-0.42 0.25-0.36	100	1020*540*1035
StationPack SN5.5-8-H1 StationPack SN5.5-10-H1 StationPack SN5.5-12.5-H1	5.5	220/380	8 10 12.5	0.15-0.3 0.3-0.7 0.3-0.55	100	1020*540*1035
StationPack SN7.5-8-H1 StationPack SN7.5-10-H1 StationPack SN7.5-12.5-H1	7.5	220/380	8 10 12.5	0.3-0.6 0.49-0.98 0.4-0.9	200	1300*600*1260 1020*540*1035
StationPack SN9-8-H1 StationPack SN9-10-H1 StationPack SN9-12.5-H1	9	220/380	8 10 12.5	0.35-0.7 0.6-1.2 0.5-1	200	1300*600*1260

STATIONPACK SN-H2

8-12.5BAR 220-380V

Permanent Magnet Variable-Speed



■ STATIONPACK SN Horizontal Type PM VFD Screw Air Compressor Parameter Table

Model	Power (kW)	Voltage (V)	Working Pressure (bar)	FAD (m ³ /min)	Air storage tank (L)	Profile Dimension L x W x H (mm)
StationPack SN2.2-8-H2 StationPack SN2.2-10-H2	2.2	220/380	8 10	0.2-0.26 0.2-0.22	130	1420*540*1035
StationPack SN3.7-8-H2 StationPack SN3.7-10-H2 StationPack SN3.7-12.5-H2	3.7	220/380	8 10 12.5	0.2-0.4 0.175-0.375 0.15-0.3	130	1420*540*1035
StationPack SN4.5-8-H2 StationPack SN4.5-10-H2	4.5	220/380	8 10	0.25-0.5 0.25-0.42	130	1420*540*1035
StationPack SN5.5-8-H2 StationPack SN5.5-10-H2 StationPack SN5.5-12.5-H2	5.5	220/380	8 10 12.5	0.3-0.7 0.3-0.55	130	1420*540*1035
StationPack SN7.5-8-H2 StationPack SN7.5-10-H2 StationPack SN7.5-12.5-H2	7.5	220/380	8 10 12.5	0.49-0.98 0.4-0.9 0.21-0.42	240	1700*600*1260
StationPack SN9-8-H2 StationPack SN9-10-H2 StationPack SN9-12.5-H2	9	220/380	8 10 12.5	0.6-1.2 0.5-1 0.4-0.8	240	1700*600*1260

STATIONPACK SN-V2

8-12.5BAR 220-380V

Permanent Magnet Variable-Speed



■ STATIONPACK SN Vertical Type PM VFD Screw Air Compressor Parameter Table

Model	Power (kW)	Voltage (V)	Working Pressure (bar)	FAD (m ³ /min)	Air storage tank (L)	Profile Dimension L x W x H (mm)
StationPack SN3.7-8-V2 StationPack SN3.7-10-V2 StationPack SN3.7-12.5-V2	3.7	220/380	8 10 12.5	0.15-0.3 0.175-0.375 0.2-0.4	150	690*690*1750
StationPack SN4.5-8-V2 StationPack SN4.5-10-V2 StationPack SN4.5-12.5-V2	4.5	220/380	8 10 12.5	0.25-0.5 0.25-0.42 0.25-0.36	150	690*690*1750
StationPack SN5.5-8-V2 StationPack SN5.5-10-V2 StationPack SN5.5-12.5-V2	5.5	220/380	8 10 12.5	0.3-0.7 0.3-0.55 0.3-0.42	150	690*690*1750
StationPack SN7.5-8-V2 StationPack SN7.5-10-V2 StationPack SN7.5-12.5-V2	7.5	220/380	8 10 12.5	0.49-0.98 0.4-0.9 0.3-0.6	150	690*690*1750

Integrated equipment to provide high quality compressed air

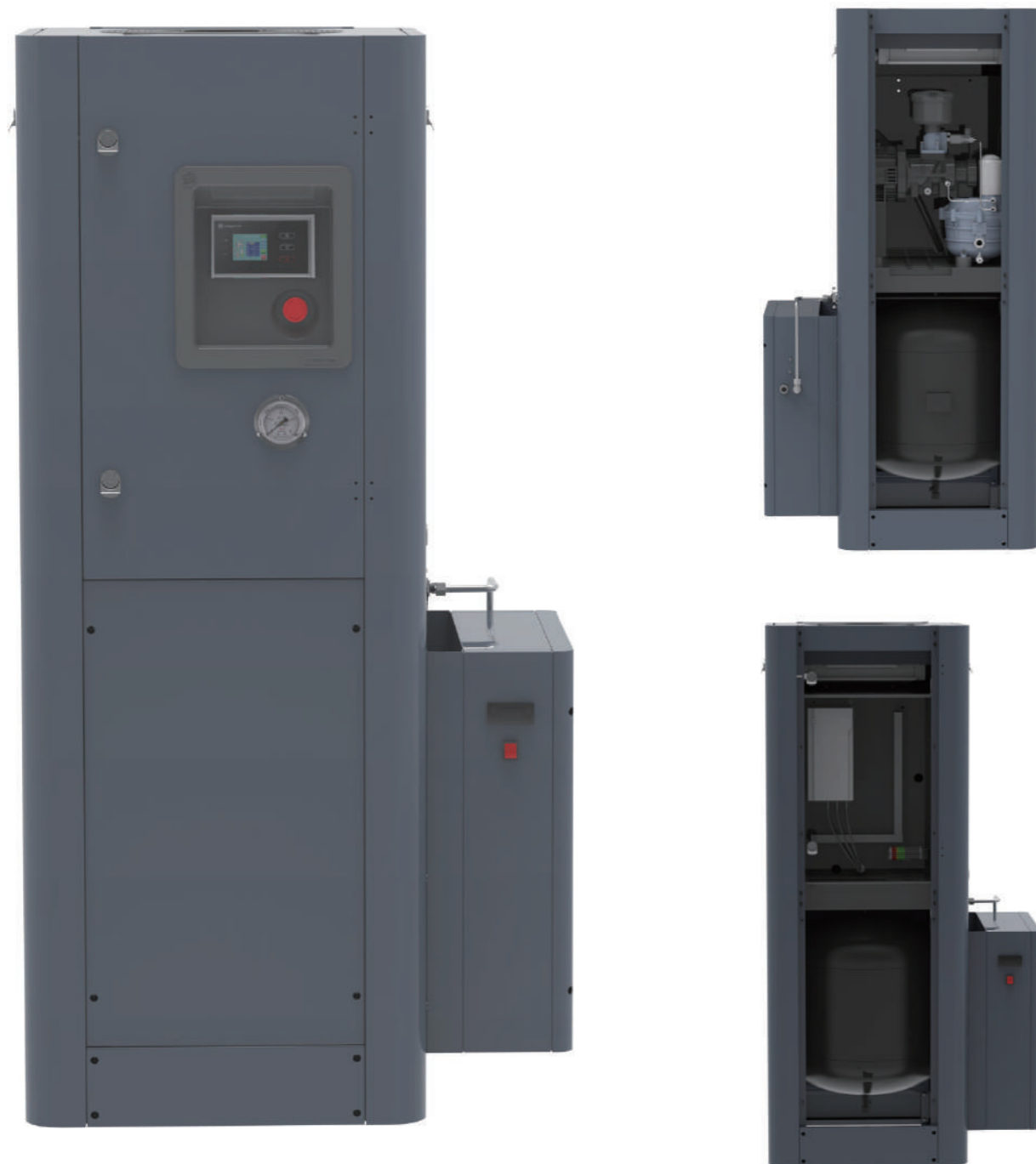
The unique patented energy-saving loop control can stop the operation of the dryer when the compressor is stopped or in unloading mode, thus greatly reducing energy consumption. Also it can continuously monitor the dew point and restart the dryer when the dew point begins to rise.

Provide more pure air

Customers can choose external filter and integrated freezing dryer. The device can effectively remove water, suspended particles and dust particles, thus protecting your equipment and products from loss. High quality dry air can extend the service life of downstream equipment, thus improving efficiency and ensuring the quality of your final product.

STATIONPACK SN-V3 STATIONPACK SN-V4 8-16BAR 220-380V

Permanent Magnet Variable-Speed



STATIONPACK SN Vertical Type PM VFD Screw Air Compressor Parameter Table

Model	Power (kW)	Voltage (V)	Working Pressure (bar)	FAD (m ³ /min)	Air storage tank (L)	Profile Dimension L x W x H (mm)
StationPack SN3.7-8-V3 StationPack SN3.7-10-V3	3.7	220/380	8 10	0.2-0.4 0.175-0.375	150	910*690*1750
StationPack SN4.5-8-V3 StationPack SN4.5-10-V3	4.5	220/380	8 10	0.25-0.5 0.25-0.42	150	910*690*1750
StationPack SN5.5-8-V3 StationPack SN5.5-10-V3	5.5	220/380	8 10	0.3-0.7 0.3-0.55	150	910*690*1750
StationPack SN7.5-8-V3 StationPack SN7.5-10-V3	7.5	220/380	8 10	0.49-0.98 0.4-0.9	150	910*690*1750
StationPack SN3.7-12.5-V3	3.5	220/380	12.5	0.15-0.3	150	910*690*1750
StationPack SN4.5-12.5-V3	4.5	220/380	12.5	0.25-0.36	150	910*690*1750
StationPack SN5.5-12.5-V3 StationPack SN5.5-16-V3	5.5	220/380	12.5 16	0.3-0.42 0.15-0.3	150	910*690*1750
StationPack SN7.5-12.5-V3 StationPack SN7.5-16-V3	7.5	220/380	12.5 16	0.4-0.8 0.3-0.6	150	910*690*1750

STATIONPACK-SN Vertical Type PM VFD Screw Air Compressor Parameter Table

Model	Power (kW)	Voltage (V)	Working Pressure (bar)	FAD (m ³ /min)	Air storage tank (L)	Profile Dimension L x W x H (mm)
StationPack SN3.7-8-V4 StationPack SN3.7-10-V4	3.7	220/380	8 10	0.2-0.4 0.175-0.375	150	910*690*1750
StationPack SN4.5-8-V4 StationPack SN4.5-10-V4	4.5	220/380	8 10	0.25-0.5 0.25-0.42	150	910*690*1750
StationPack SN5.5-8-V4 StationPack SN5.5-10-V4	5.5	220/380	8 10	0.3-0.7 0.3-0.55	150	910*690*1750
StationPack SN7.5-8-V4 StationPack SN7.5-10-V4	7.5	220/380	8 10	0.49-0.98 0.4-0.9	150	910*690*1750
StationPack SN3.7-12.5-V4	3.5	220/380	12.5	0.15-0.3	150	910*690*1750
StationPack SN4.5-12.5-V4	4.5	220/380	12.5	0.25-0.36	150	910*690*1750
StationPack SN5.5-12.5-V4 StationPack SN5.5-16-V4	5.5	220/380	12.5 16	0.3-0.42 0.15-0.3	150	910*690*1750
StationPack SN7.5-12.5-V4 StationPack SN7.5-16-V4	7.5	220/380	12.5 16	0.4-0.8 0.3-0.6	150	910*690*1750

Integrated equipment to provide high quality compressed air

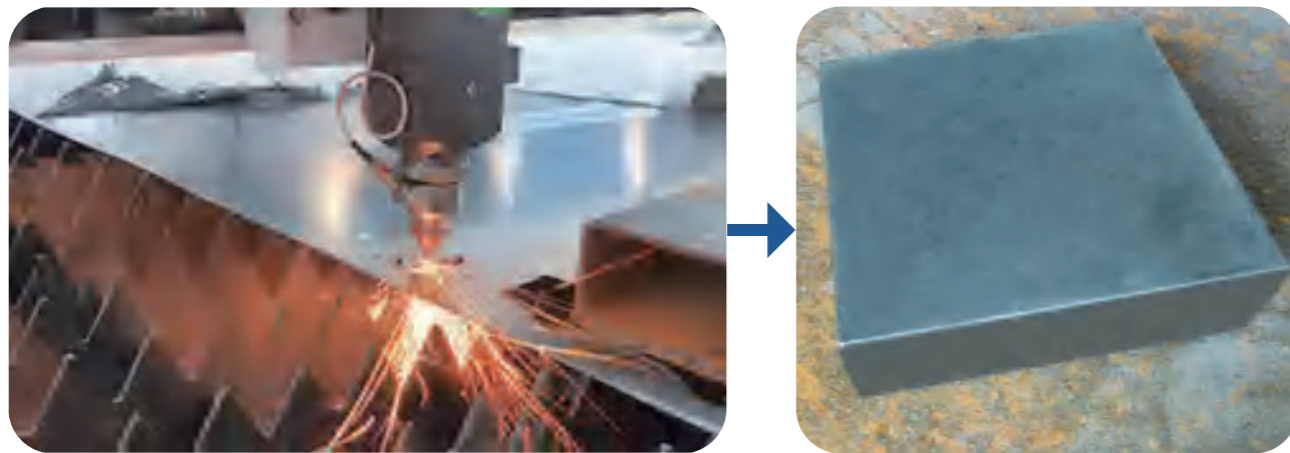
The unique patented energy-saving loop control can stop the operation of the dryer when the compressor is stopped or in unloading mode, thus greatly reducing energy consumption. Also it can continuously monitor the dew point and restart the dryer when the dew point begins to rise.

Provide more pure air

Customers can choose external filter and integrated freezing dryer. The device can effectively remove water, suspended particles and dust particles, thus protecting your equipment and products from loss. High quality dry air can extend the service life of downstream equipment, thus improving efficiency and ensuring the quality of your final product.

LASER CUTTING COMPRESSION SYSTEM

Laser cutting is an advanced material processing technology that employs laser beams to execute precise cutting operations. Characterized by its high efficiency and the production of clean, flat-cut edges, this method has become an indispensable technique in various sectors, including machinery, hardware, and manufacturing. Air, as a gas medium, presents significant benefits due to its cost-effectiveness and its ability to deliver superior cutting outcomes for specific materials when compared to oxygen or nitrogen. The industry has embraced this gas source for its consistent performance and reliability over the years.



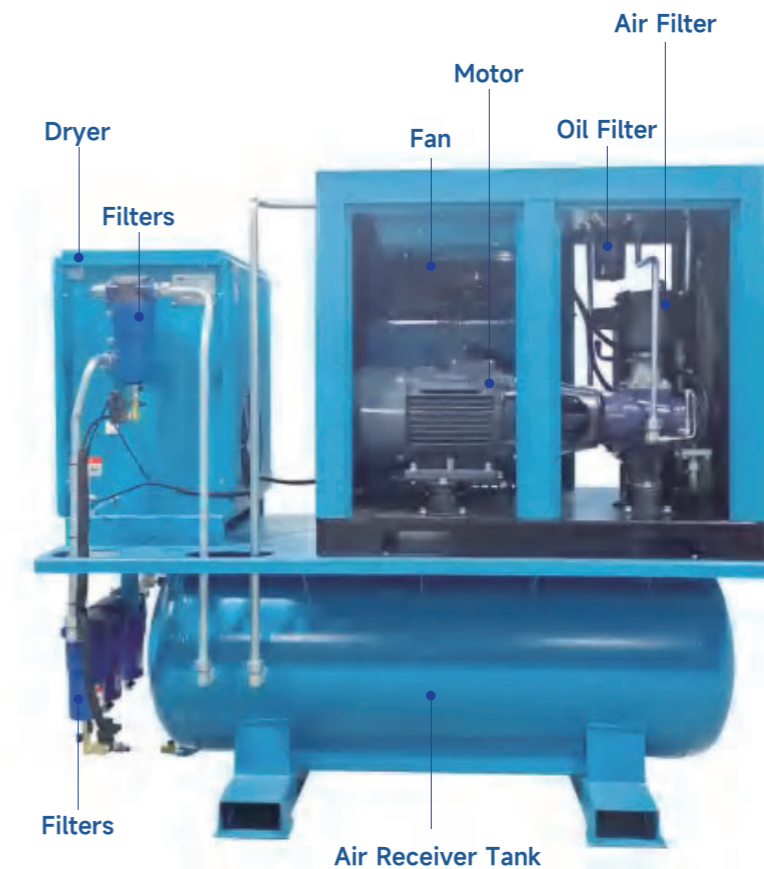
SIND is renowned for its expertise in crafting laser cutting compression system. We offer tailored solutions with motor protection ratings of IP55 and IP65 for extended durability. Additionally, we provide cost-effective motors with IP23 protection for enhanced economic efficiency. Our compressors are equipped with a specialized laser professional refrigerated dryer capable of achieving a pressure dew point between 2-10 °C, ensuring optimal cutting performance. An extra-large air storage tank ensures stable operation by providing a consistent air supply.

Quadruple precision filter:

The system includes a quadruple precision filter for high filtration accuracy, which is easy to clean and maintain. The filter elements are replaceable, guaranteeing a continuous supply of clean and fresh air. Furthermore, an intelligent integrated control system with multiple safeguards effectively prevents issues such as overheating, short-circuiting, and overload, ensuring reliable and safe operation.

Tank-Mounted Laser Cutting Systems:

A key advantage of tank-mounted laser cutting systems equipped with air compressors is their compact design, which conserves space while ensuring smooth operation. These systems are engineered to deliver high-purity air, a prerequisite for achieving the precision and quality demanded by laser cutting processes.



Environmental Control:

Laser cutting compressor operates under stringent environmental conditions, necessitating an oil-free, water-free, and dust-free environment. Any deviation from these standards can compromise the cutting quality and may result in damage to critical components, such as protective and focusing lenses. In extreme scenarios, it can lead to the irreparable failure of the laser cutting head. In response to these challenges, our company has implemented technological upgrades and reforms to ensure compliance with the highest standards of operational purity and efficiency.

Our commitment to innovation and technological advancement ensures that our laser cutting solutions are at the forefront of industry standards, providing our clients with the reliability and precision they require for their manufacturing processes.

LASER CUTTING STATIONPACK SN

16-20BAR 380V



■ Laser Cutting STATIONPACK SN Horizontal Type Fixed Speed And PM VFD Screw Air compressor Parameter Table

Model	Power (kW)	Voltage (V)	Working Pressure (bar)	FAD (m ³ /min)	Profile Dimension L x W x H (mm)
StationPack SN7.5-16-H StationPack SN11-16-H	7.5 11	380	16	0.6 1.0	800*780*980 950*800*1150
StationPack SN15-16-H StationPack SN15-18-H StationPack SN15-20-H	15	380	16 18 20	1.5 1.1 1.0	950*800*1150
StationPack SN22-16-H StationPack SN22-18-H StationPack SN22-20-H	22	380	16 18 20	2.0 1.9 1.6	1220*820*1050
StationPack SN30-16-H StationPack SN30-18-H StationPack SN30-20-H	30	380	16 18 20	3.0 2.8 2.4	1220*820*1050
StationPack SN37-16-H StationPack SN37-18-H StationPack SN37-20-H	37	380	16 18 20	3.5 3.5 3.1	1420*1000*1300
StationPack SN45-16-H StationPack SN45-18-H StationPack SN45-20-H	45	380	16 18 20	4.3 4.3 3.8	1420*1000*1300
StationPack SN55-16-H StationPack SN75-16-H	55 75	380	16	6.1 7.3	1700*1150*1500
StationPack SN90-16-H StationPack SN110-16-H StationPack SN132-16-H	90 110 132	380	16	9.0 12.0 15.0	1900*1200*1555 2100*1250*1700 2300*1650*2000

*All parameters are correct at the print, may vary with future improvement without prior notice

LASER CUTTING ALL-IN-ONE STATIONPACK SN 16-20BAR 220-380V



■ Laser Cutting All-in-one STATIONPACK SN Horizontal Type Fixed Speed And PM VFD Screw Air Compressor Parameter Table.

Model	Power (kW)	Voltage (V)	Working Pressure (bar)	FAD (m ³ /min)	Profile Dimension L x W x H (mm)
StationPack SN7.5-16-H2 StationPack SN11-16-H2	7.5 11	220/380	16	0.6 1.0	1400*800*1550 1750*850*1750
StationPack SN15-16-H2 StationPack SN15-18-H2 StationPack SN15-20-H2	15	220/380	16 18 20	1.5 1.1 1.0	1750*850*1750
StationPack SN22-16-H2 StationPack SN22-18-H2 StationPack SN22-20-H2	22	220/380	16 18 20	2.0 1.9 1.6	1950*900*1900
StationPack SN30-16-H2 StationPack SN30-18-H2 StationPack SN30-20-H2	30	220/380	16 18 20	3.0 2.8 2.4	1950*900*1900
StationPack SN37-16-H2 StationPack SN37-18-H2 StationPack SN37-20-H2	37	220/380	16 18 20	3.5 3.5 3.1	2220*970*1900
StationPack SN45-16-H2 StationPack SN45-18-H2 StationPack SN45-20-H2	45	220/380	16 18 20	4.3 4.3 3.8	2220*970*1900

Note: All-in-one Screw compressors above 37kw are skid mounted type.

AIR NITROGEN ALL-IN-ONE STATIONPACK SN 14BAR 220-380V



■ Ultra clean Air High-pressure Air Nitrogen All-in-one Screw compressor (92%-99%) purity

Model	Power (kW)	Voltage (V)	Nitrogen (m ³ /h)			Working Pressure (bar)	FAD (m ³ /min)	Profile Dimension L x W x H (mm)
			99%	96%	95%			
Station pack SN-22-N ₂	22	220/380	50	60	75	14	2.5	900*650*2100
Station pack SN-37-N ₂	37	220/380	80	100	120	14	4.2	900*650*2100
Station pack SN-45- N ₂	45	220/380	120	135	150	14	5.2	900*650*2100
Station pack SN-75- N ₂	75	220/380	160	200	240	14	8.4	1300×650×2100

Remark;

- 1.Our standard machines are equipped with 16bar permanent magnet variable frequency air compressor;
- 2.The rated purity is based on 95%;
- 3.Nitrogen pressure \geq 13bar;
- 4.The inlet air of the super clean air compressor is less than 0.01ppm;
- 5.The Nitrogen outlet has a dust content of $<0.01\mu\text{m}$, and is equipped with two dust removal tight filters as standard.

Our commitment to innovation and technological advancement ensures that our laser cutting solutions are at the forefront of industry standards, providing our clients with the reliability and precision they require for their manufacturing processes.

AFTER SERVICE

'BE OF SERVICE' ATTITUDE

- ▶▶ LEARN CUSTOMER'S NEEDS
- ▶▶ CAREFULLY DIAGNOSE FAULTS
- ▶▶ TROUBLESHOOTING BY HEART

